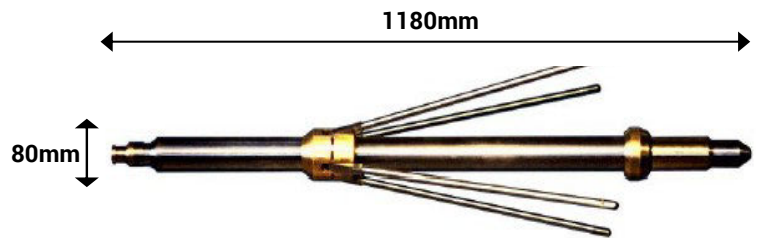
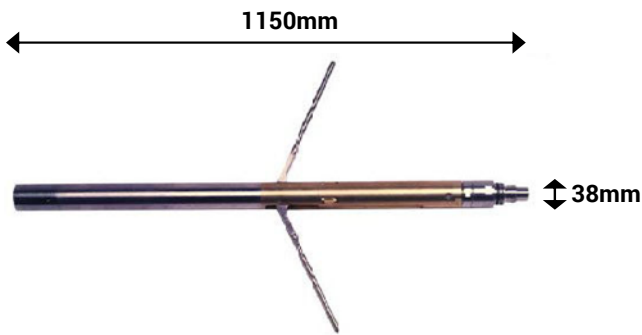




CALIPER TOOLS

These tools measure the mean diameter of boreholes. They are used to check the integrity of borehole linings, and where a borehole is unlined to identify zones of washout, breakout or fissures.

For narrower boreholes (<400mm) the 2 or 3 arm calipers give greater resolution than a 4 arm caliper.



Specifications

2 or 3 Arm Caliper

4 Arm Caliper

Size: 1150 x 38 mm
Weight: 6kg
Range: 50 - 600mm
Max. temperature: 80°C
Max. pressure: 20MPa

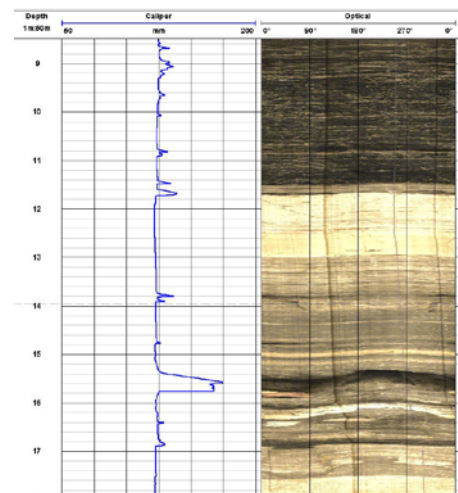
Size: 1180 x 80 mm
Weight: 18kg
Range: 100 - 1500mm
Max. temperature: 80°C
Max. pressure: 20MPa

Logging Conditions

2 - 9 m / min
Free runnig

Borehole Conditions

Dry or fluid filled
Unlines or lined



Example caliper log showing fractures in sandstone seen in the optical image