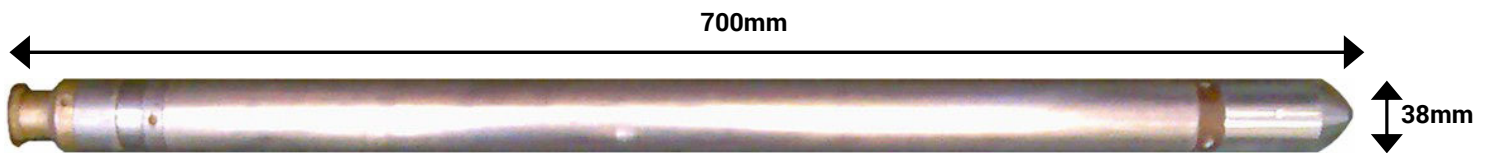




NORTH SEEKING GYRO SONDE

The North Seeking Gyro sonde provides full multishot orientation and deviation surveys of boreholes in any environment, including steel casing and drill pipe. It incorporates a gyro which is unaffected by steel or areas of magnetic anomalies.

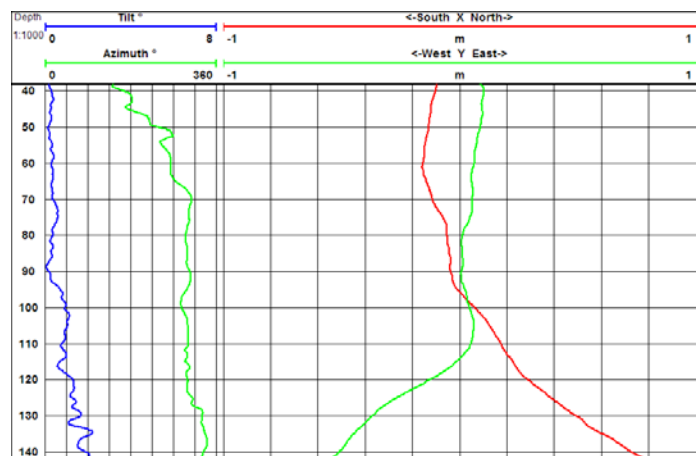


Specifications

Size:	1320 x 34mm
Weight:	5.2kg
Tilt:	0° - 70° +/-0.5°
Azimuth	0° - 360° +/-2°
Max.temperature:	80°C

Borehole Conditions

Minimum diameter 40mm
Dry or fluid filled
Unlined, plastic or steel lined



Example verticality Log

Logging Conditions

Shots taken at specified intervals

