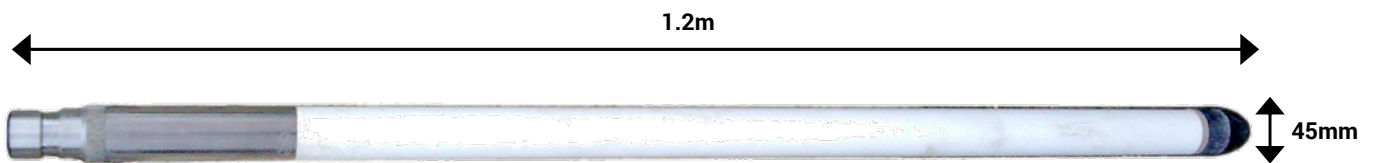




MAGNETIC SUSCEPTIBILITY TOOL

This is a two or three coil sonde designed to measure apparent formation magnetic susceptibility. The three coils system sonde allows for measurements in a wide range of formations. The dual spacing allows borehole and formation fluid properties to be investigated.



Specifications

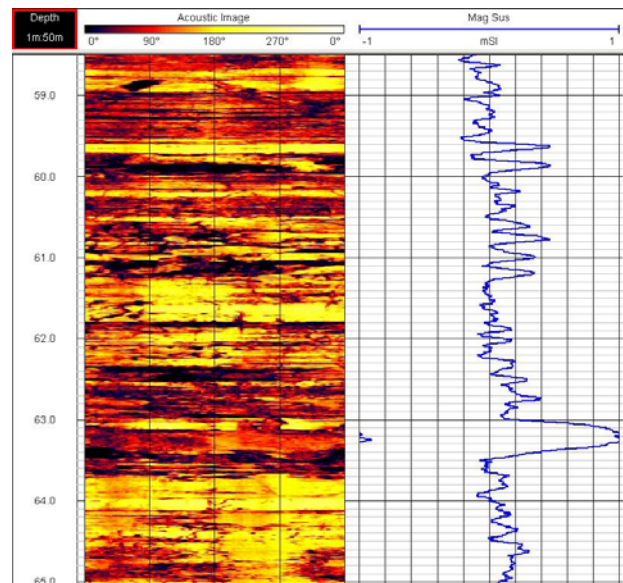
Size:	1.2m x 45mm
Weight:	5kg
Apparent Susceptibility Range:	10^{-5} - 0.5 S.I. Units
Resolution:	1 Count
Transmitter Coil Frequency:	2kHz

Borehole Conditions

Minimum diameter 50mm
Dry or fluid filled
Unlined, or plastic lined

Logging Conditions

2 - 4 m/min
Free running



Formation evaluation using Acoustic Imager and Magnetic Susceptibility