

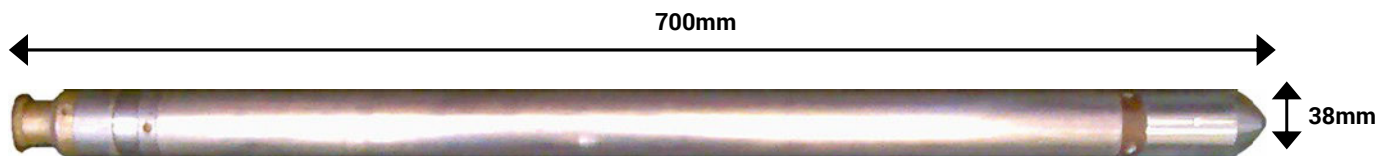


## NATURAL GAMMA TOOL

This tool measures the naturally occurring gamma radiation found in rocks and sediments. Gamma radiation is found in minerals containing Potassium<sup>40</sup>, Uranium<sup>238</sup> and Thorium<sup>232</sup>.

Argillaceous formations (shales, mudstones and siltstones) tend to have a high concentration of minerals that contain potassium.

The higher the concentration of these potassium rich minerals the greater the responses on the natural gamma log.



### Specifications

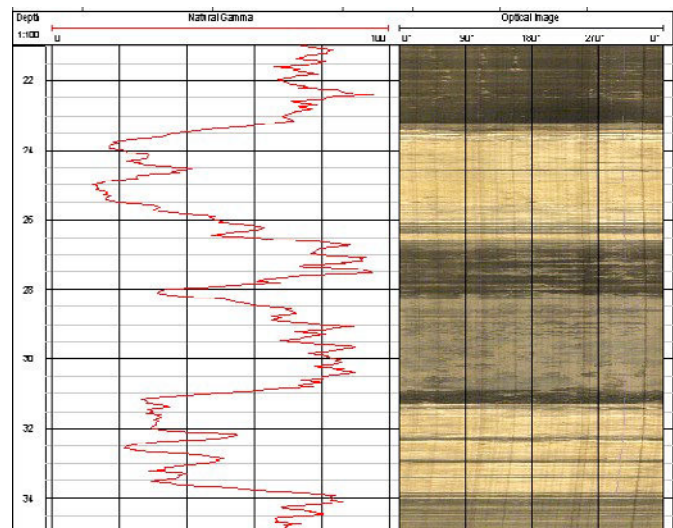
Size:	700m x 38mm
Weight:	3.5kg
Detector (Nail):	25 x 50 mm
Max. temperature:	80°C
Max.pressure:	20MPa

### Borehole Conditions

Minimum diameter 50mm  
Dry or fluid filled  
Unlined, steel or plastic lined

### Logging Conditions

2 - 9 m/min  
Free running



Interbedded Sandstones, Siltstones and Mudstones.