



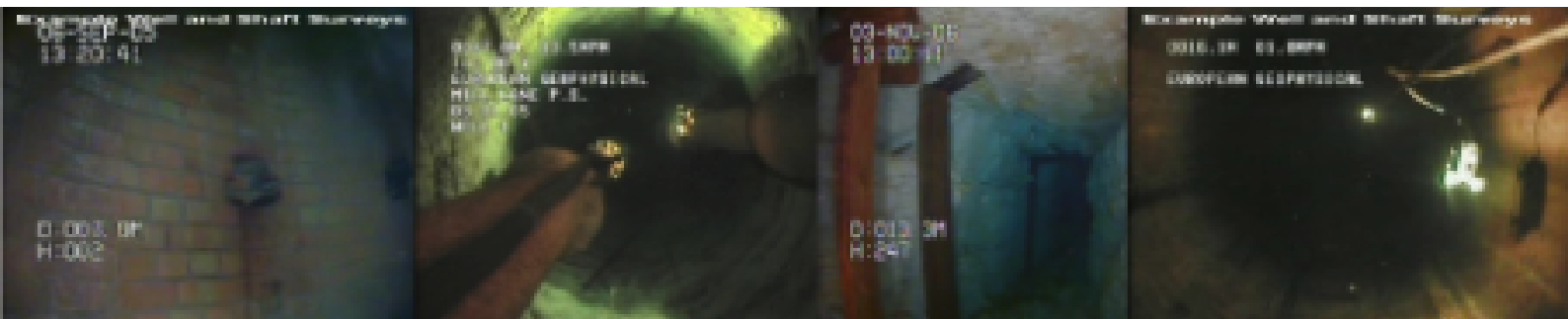
WIDE DIAMETER WELL SURVEYS

European Geophysical Services Ltd offer a specialist wide diameter well and shaft CCTV survey service including the use of a **Remote Operated Vehicle (ROV)**. Our vast experience in this area has allowed us to carry out successful surveys in wells over 10m in diameter and over 300m deep. Both CCTV camera and ROV can provide orientation data on features and tunnel directions.

The ROV provides the facility for detailed surveys of the well or shaft walls with the ability to survey up to 250m along water filled adit systems and tunnels.

This greatly reduces the health and safety implications of using specialist divers by allowing an initial survey of the hazards before divers enter the water, or negating the need for diver entry at all.

The ROV can be used with a sonar attachment which provides measurements of well or shaft diameters and tunnel widths. (Tunnel heights are measured with the ROV depth readings.)



CCTV Specifications

Size: 1300m x100mm
Weight: 15kg
Max.temperature: 80°C

ROV Specifications

Size: 240x300x360mm
Weight: 12kg
Temperature: 1-50°C
Max. depth: 90m below WL

ROV Operational Conditions

Minimum access hole: 400x400mm
Minimum well/shaft diameter: 1000mm round or equivalent
Water filled wells, shafts, adits and tunnels

CCTV Operational Conditions

Minimum access hole: 150mm round or equivalent
Maximum diameter: Please contact us with your requirements